



# LJI 1ST DAY PROCEDURES: PHASE ONE VIRTUAL LEARNING STUDENTS AND PARENTS

---

Panthers -

In addition to the "LJI PHASE ONE PROCEDURES" of

- Logging into your computer
- Changing your password and
- Logging into your Google Classrooms

You also need to know what those first 8 days on campus will look like.

LJI Arrival - 7:25a - Students should be logged into their first period by 7:25a.

What You Need - Prepare like you would for a usual school day. Have materials easily accessible around you. All students are expected to have the same school supplies as if they were on campus. Refer to the LJI school website for a comprehensive list of school supplies, Chromebook with charger, earbuds/headphones. \*\* Be sure that your Chromebook is fully charged the night before.

Lunch- Your lunch schedule is based on your 5th period teacher. During your lunch break, take some time to step away from the screen, have lunch, and/or a brain break. Be sure that you set a timer, so you are on time to your next period class. Read below for breakfast and lunch

Anyone enrolled in BISD but not attending a campus

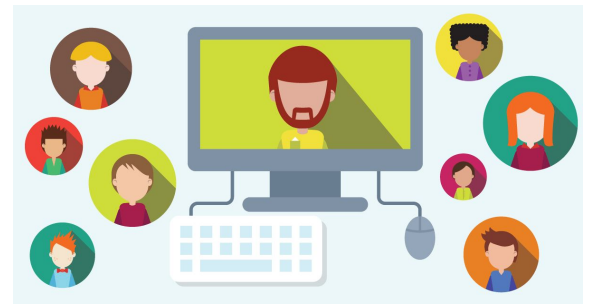
- Breakfast and lunch will be available daily, at one pick up. You may choose to pick up one or both.
- Curbside meals will be available at all campuses, so we are asking parents to go to the campus where their child is enrolled to pick up their meals.
  - If a family has more than one child, they will be allowed to pick up all of their meals at one location.
- Meals can be picked up between 12pm-1pm daily beginning Aug. 19th.
- Pick up will be a curbside service through the back drive (bus ramp) that is nearest the cafeteria. Entrance/exit is from Oak Drive.



- All meals will be counted and claimed, which means, students will be charged at their status of Free, Reduced and Paid. This makes it very important for all families to fill out the application. [www.schoolcafe.com](http://www.schoolcafe.com)
- We will charge student's accounts for meals picked up.
- We will not be able to make change in the curbside service, but we will be able to accept cash payments.

Ex. If a parent hands us a 20 dollar bill, we CAN deposit that into the account. We can NOT give change for purchase of just one meal.

- These meals are only for ENROLLED students
  - We ask you to show some type of proof of enrollment. This can be a student ID, report card, eligibility letter, or anything else that shows us your child is enrolled.
  - Parents/guardians may pick up meals without the child present.



For more information contact the Child Nutrition Office 979-730-7110

This institution is an equal opportunity provider.